

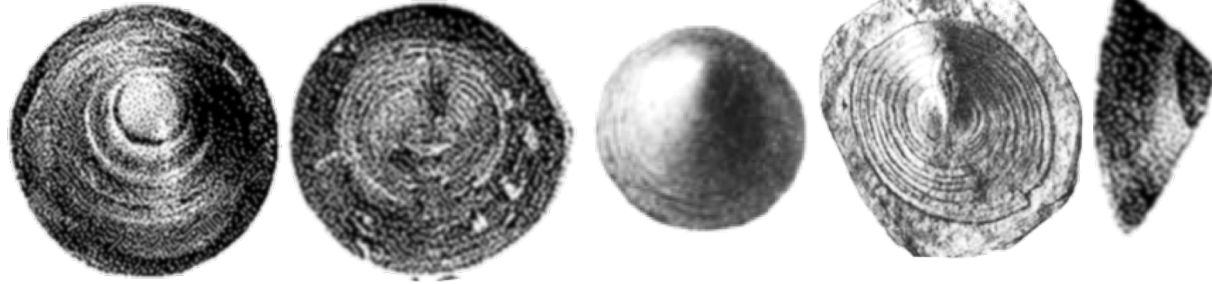
Pictorial Guide to Upper Pennsylvanian Fossils

By Ben Neuman, in conjunction with the Dallas Paleontological Society

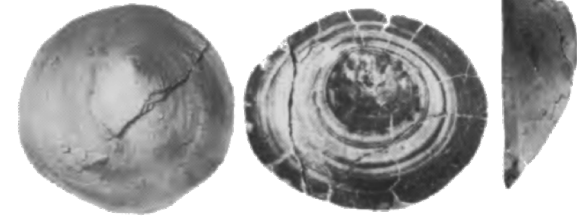
Section 1 - Brachiopoda

Brachiopoda – Lingulida, Craniida

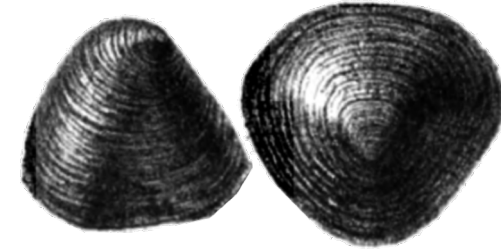
Orbiculoidea missouriensis
Dunbar & Condra 1932, Girty 1910



Orbiculoidea capuliformis
Sturgeon & Hoare 1968



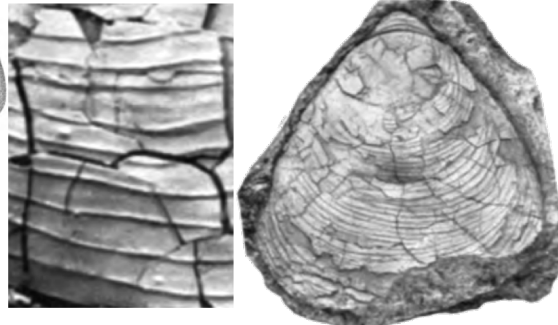
Orbiculoidea subtrigonalis
McChesney 1867



Trigonoglossa casteriana
Girty 1939, Meek 1872



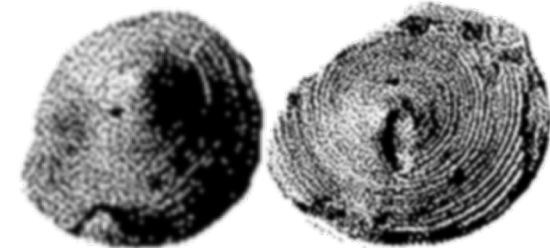
Trigonoglossa flabellula
Girty 1939



Trigonoglossa nebrascensis
Girty 1911



Lindstroemella patula
Dunbar & Condra 1932



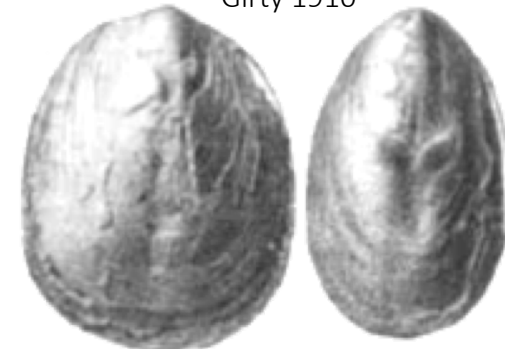
Petrocrania modesta
Dunbar & Condra 1932, Sutherland & Harlow 1967, Girty 1911



Lingula carbonaria
Dunbar & Condra 1932



Lingula carbonaria
Girty 1910



Brachiopoda – Orthotetida

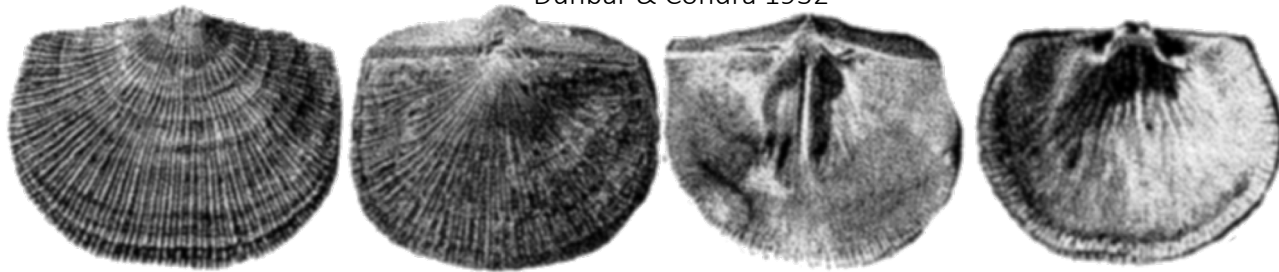
Derbyia crassa

McChesney 1867, Girty 1915, Dunbar & Condra 1932



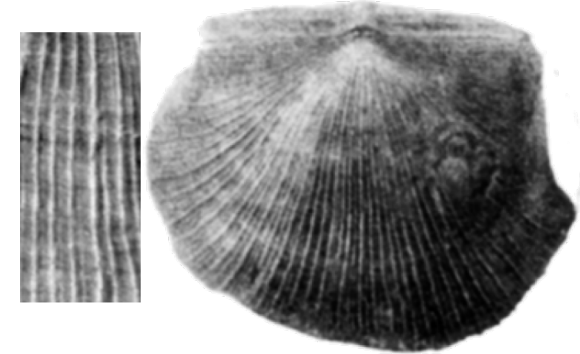
Derbyia crassa var. *texana*

Dunbar & Condra 1932



Derbyia plattsmouthensis

Dunbar & Condra 1932



Derbyia cymbula

Dunbar & Condra 1932



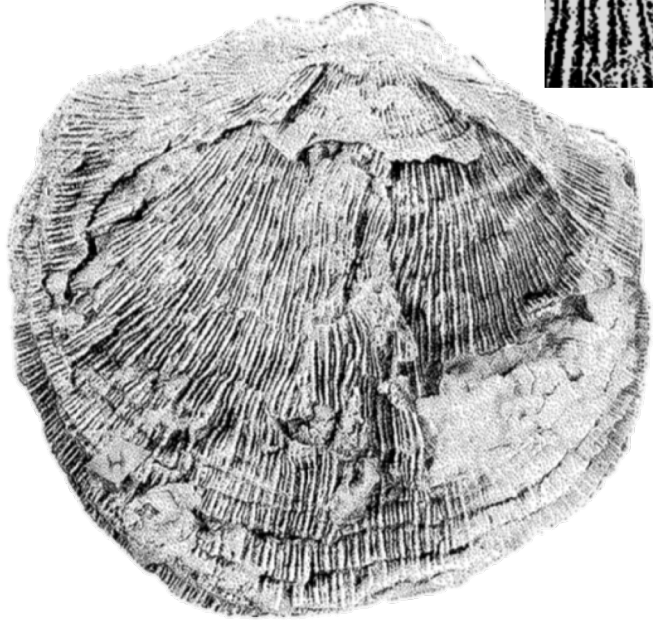
Derbyia bennetti

Dunbar & Condra 1932



Brachiopoda – Orthotetida

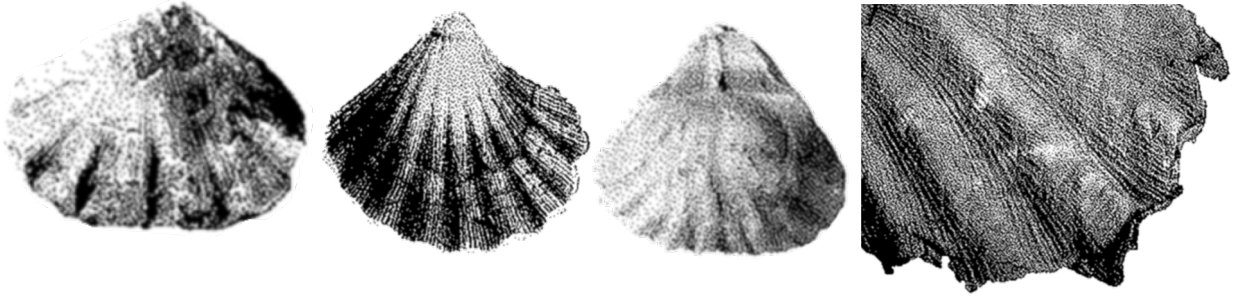
Derbyia jacksboroensis
Dunbar & Condra 1932



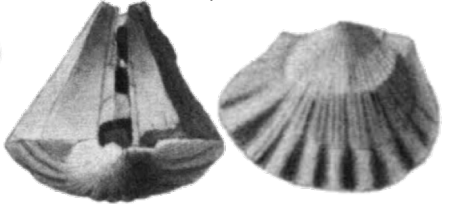
Derbyia ciscoense
Dunbar & Condra 1932



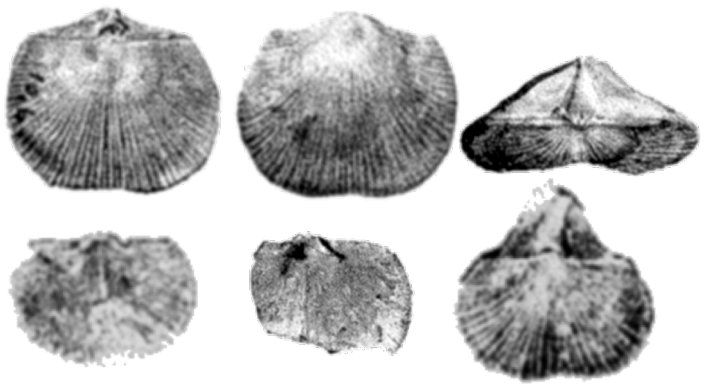
Meekella striatocoastata
Dunbar & Condra 1932



Meekella skenoides
Girty 1915



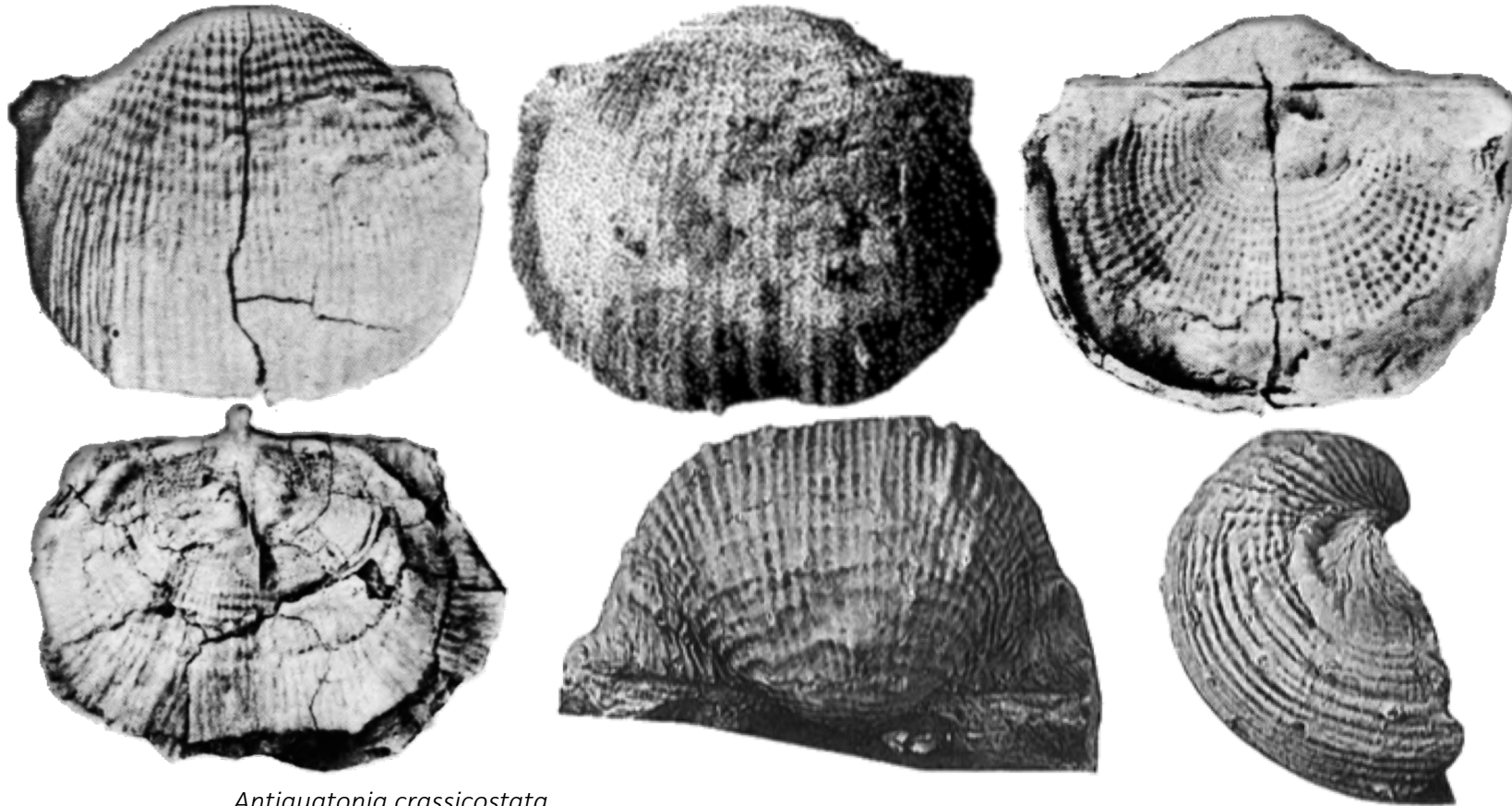
Schuchertella pratteni
Dunbar & Condra 1932



Brachiopoda – Productida

Antiquatonia portlockiana

Hoare 1961, Dunbar & Condra 1932, Muir-Wood & Cooper 1960



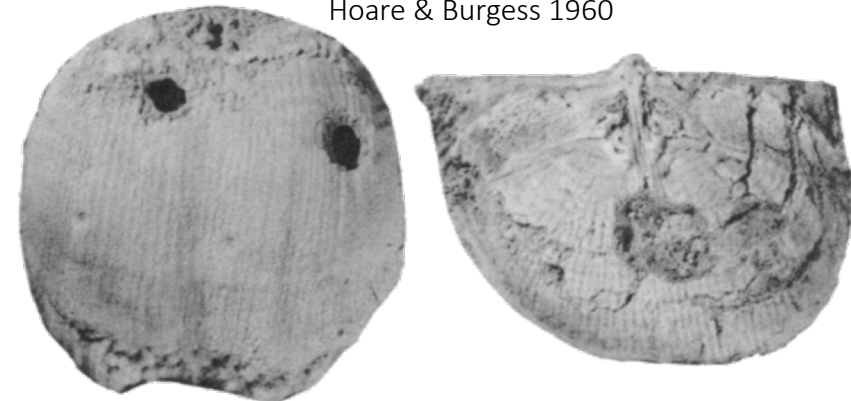
Antiquatonia crassicostata

Dunbar & Condra 1932



Antiquatonia hermosana

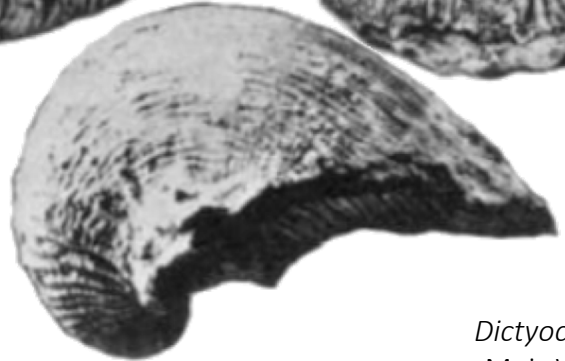
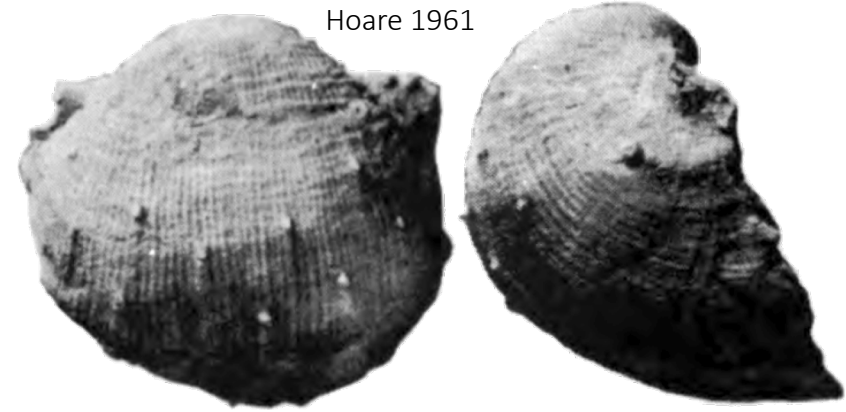
Hoare & Burgess 1960



Dasysaria welleri
King 1938



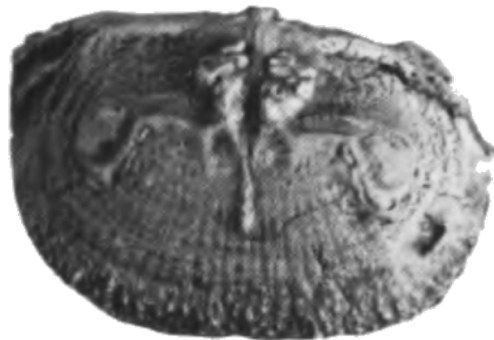
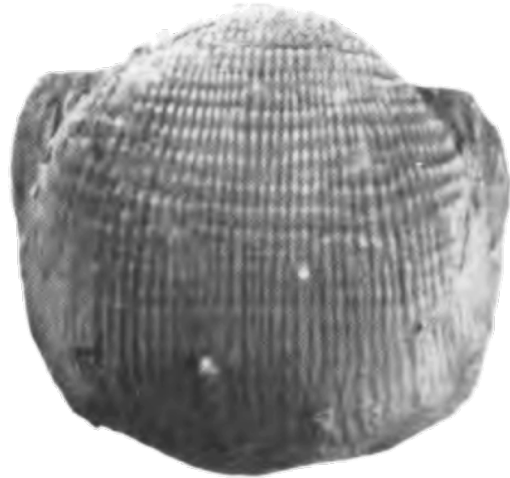
Antiquatonia coloradoensis
Hoare 1961



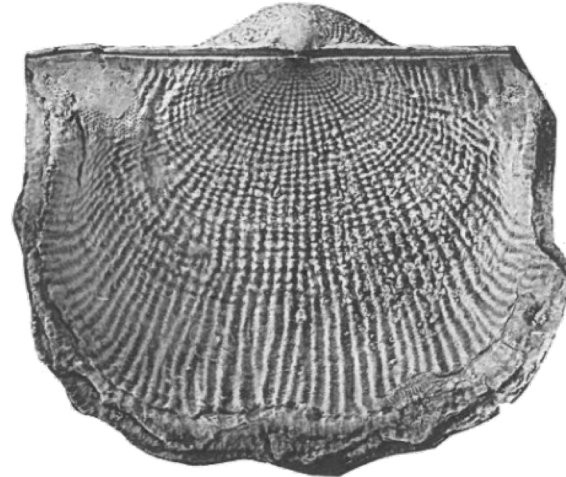
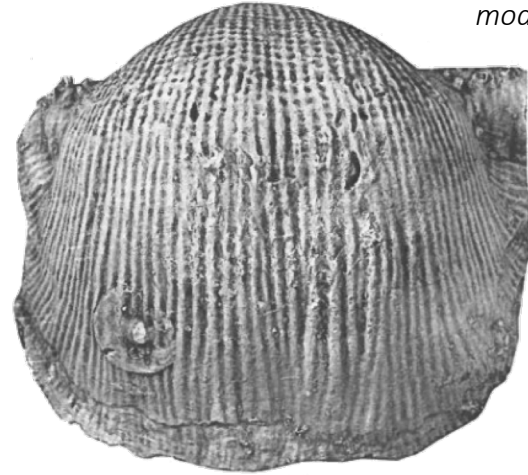
Dictyoclostus semireticulatus
Muir-Wood & Cooper 1960



Reticulatia rugata
Sturgeon & Hoare 1968

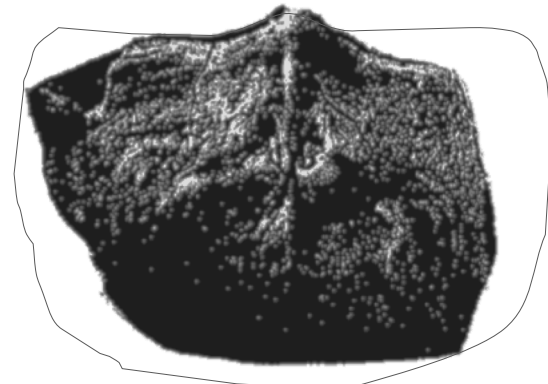
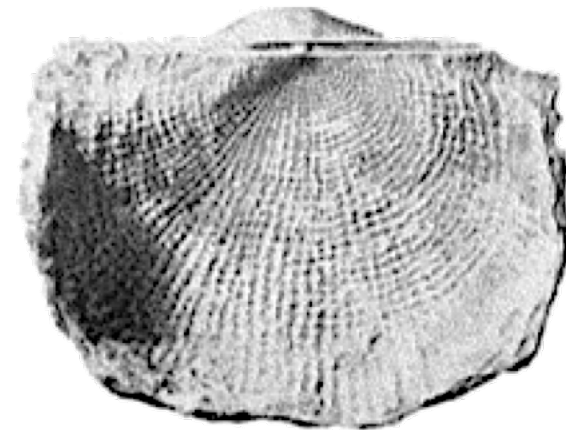
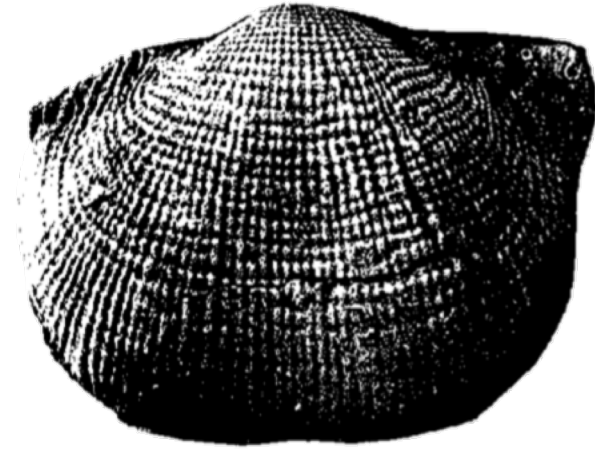


Reticulatia huecoensis
Muir-Wood & Cooper 1960



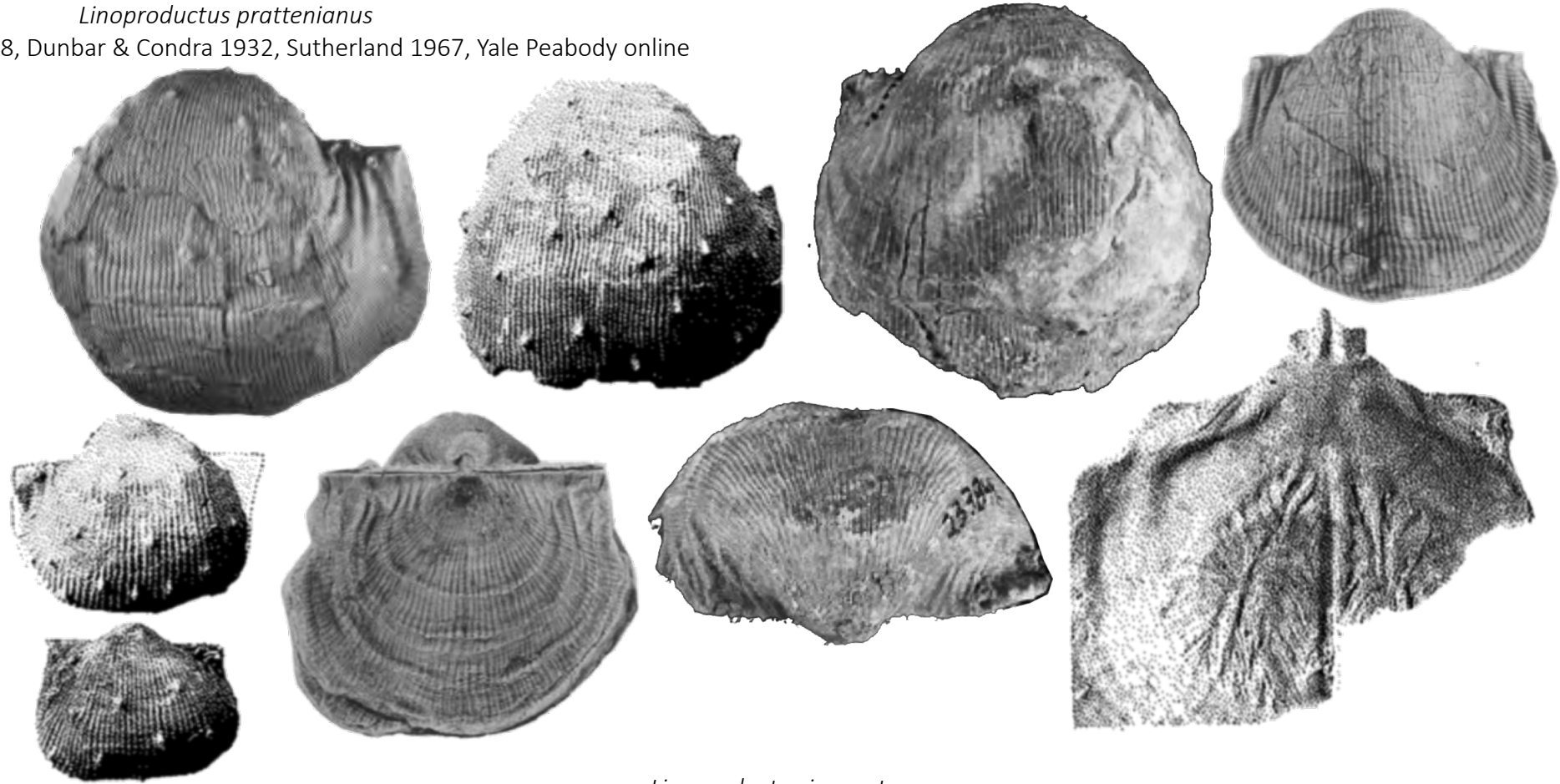
with
Petrocrania
modesta

Reticulatia americana
Branson 1964, Dunbar & Condra 1932



Linoproductus prattenianus

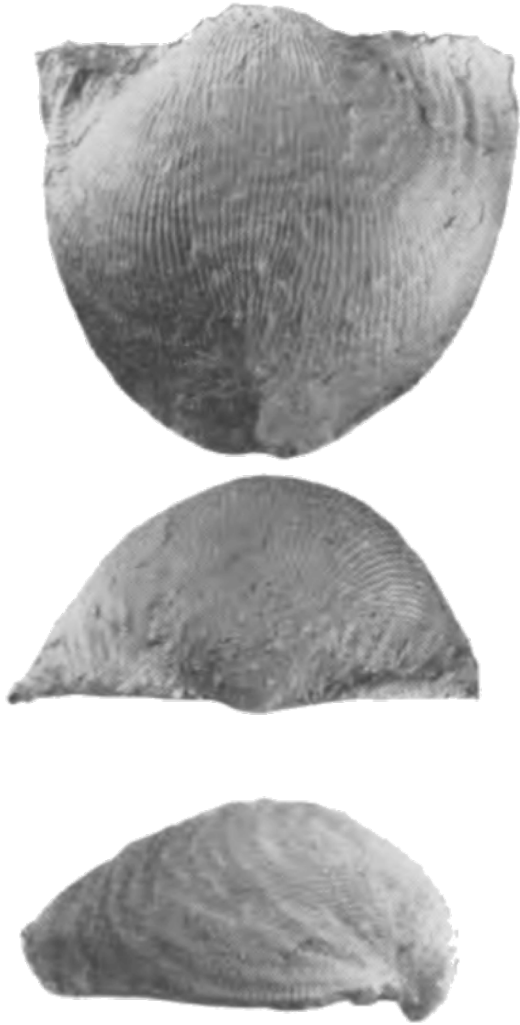
Sturgeon & Hoare 1968, Dunbar & Condra 1932, Sutherland 1967, Yale Peabody online



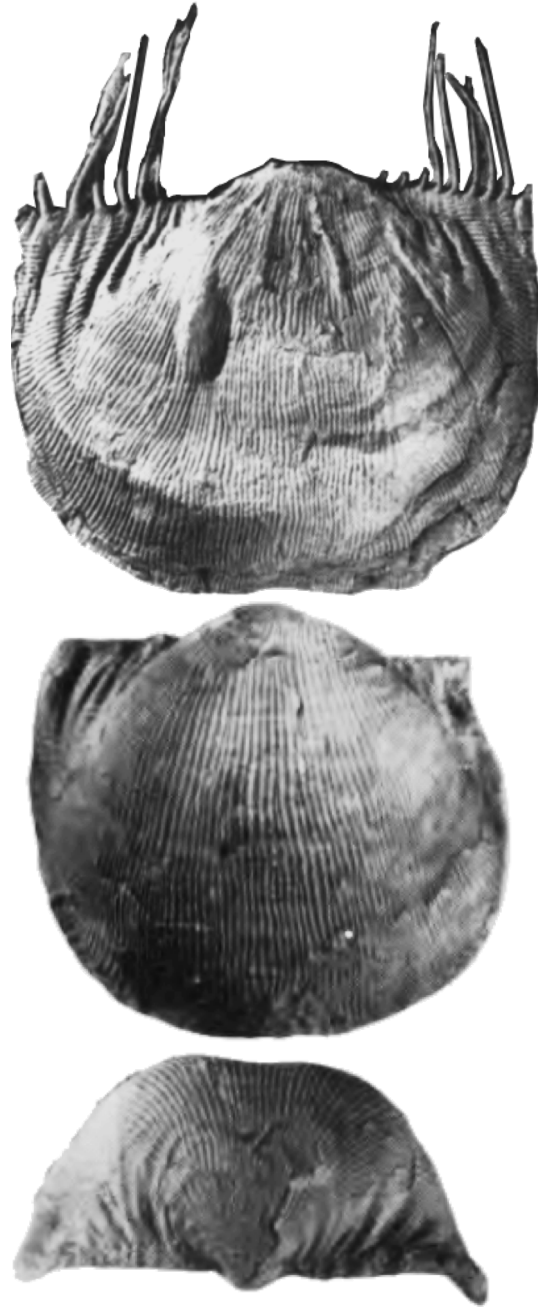
Linoproductus inornatus
King 1938



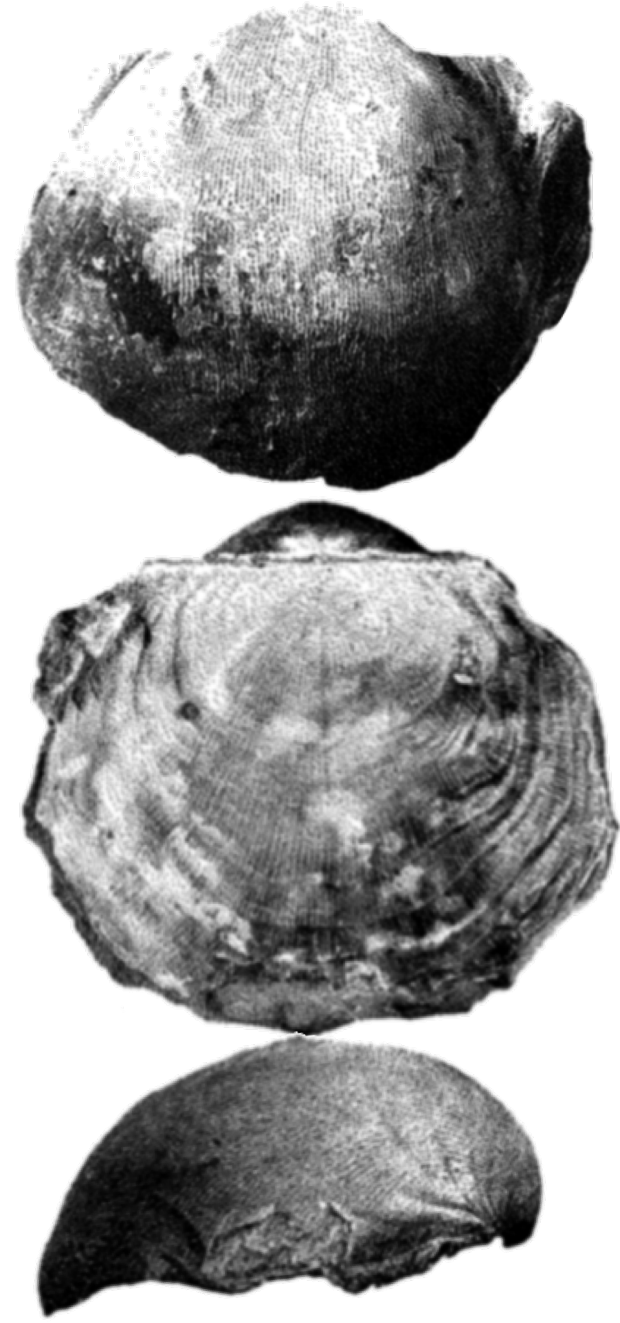
Linoproductus oklahomae
Sturgeon & Hoare 1968



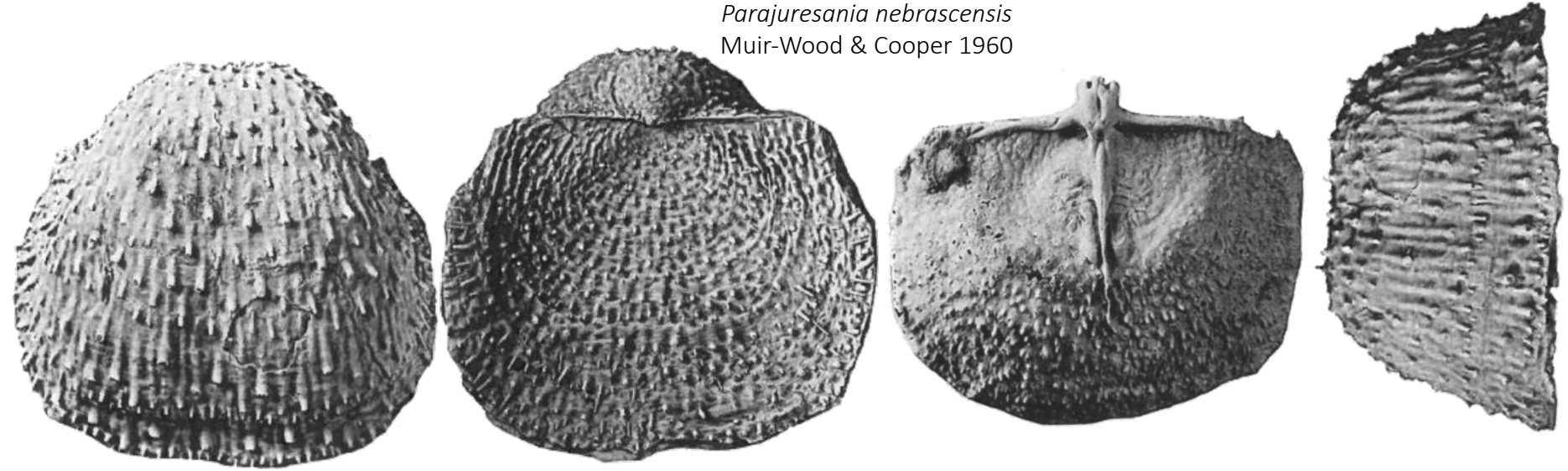
Linoproductus platyumbonus
Sturgeon & Hoare 1968



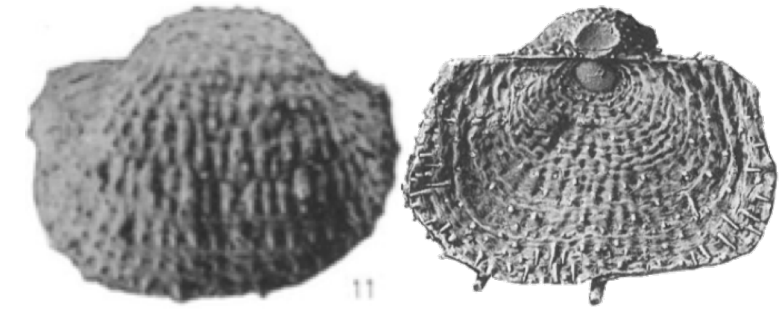
Linoproductus meniscus
Dunbar & Condra 1932



Parajuresania nebrascensis
Muir-Wood & Cooper 1960



Juresania rectangularia
King 1938 (L), Muir-Wood & Cooper 1960 (R)

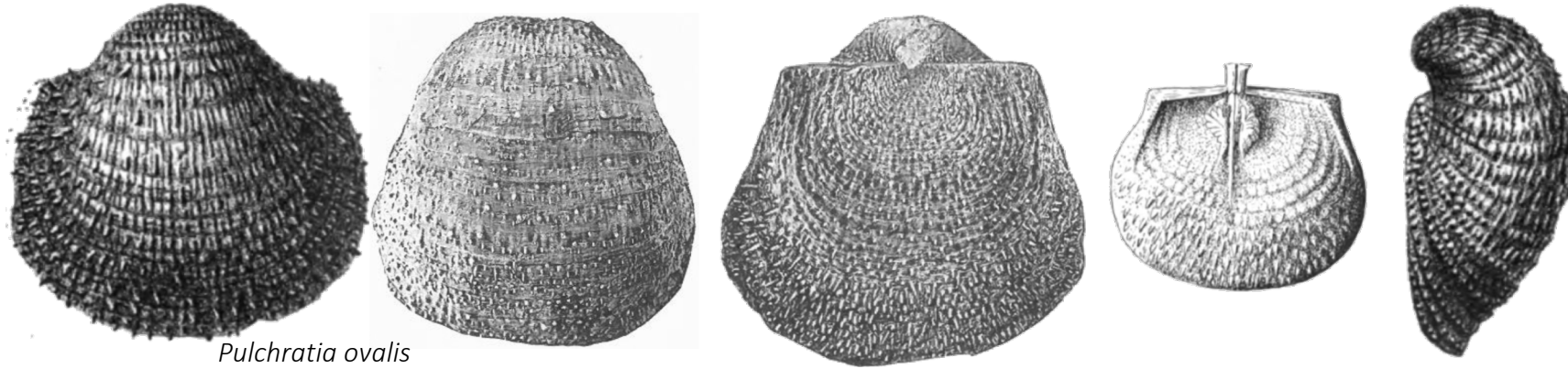


Echinoconchus reticulatus with interior from *E. alternatus*
Muir-Wood & Cooper 1960

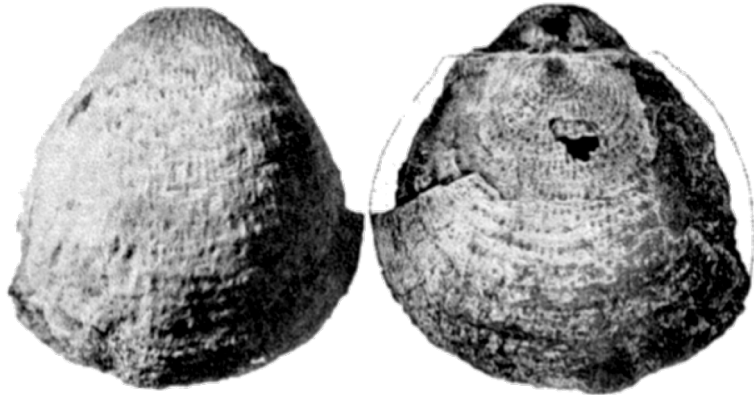


Pulchratia symmetrica

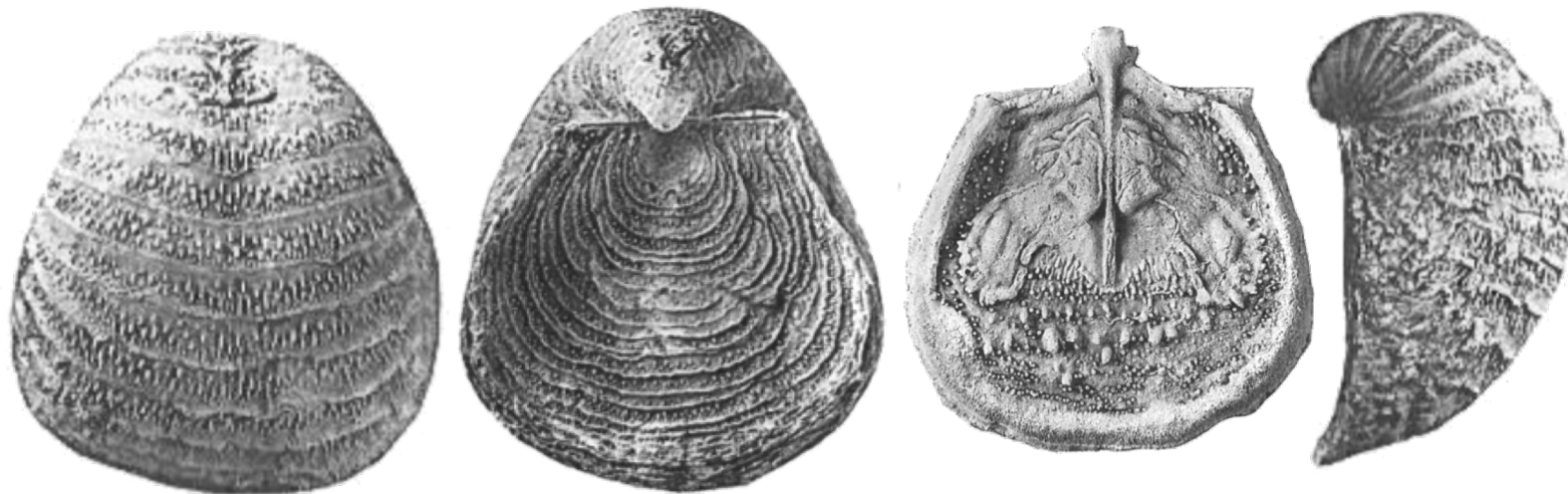
McChesney 1867, Girty 1900, Muir-Wood & Cooper 1960



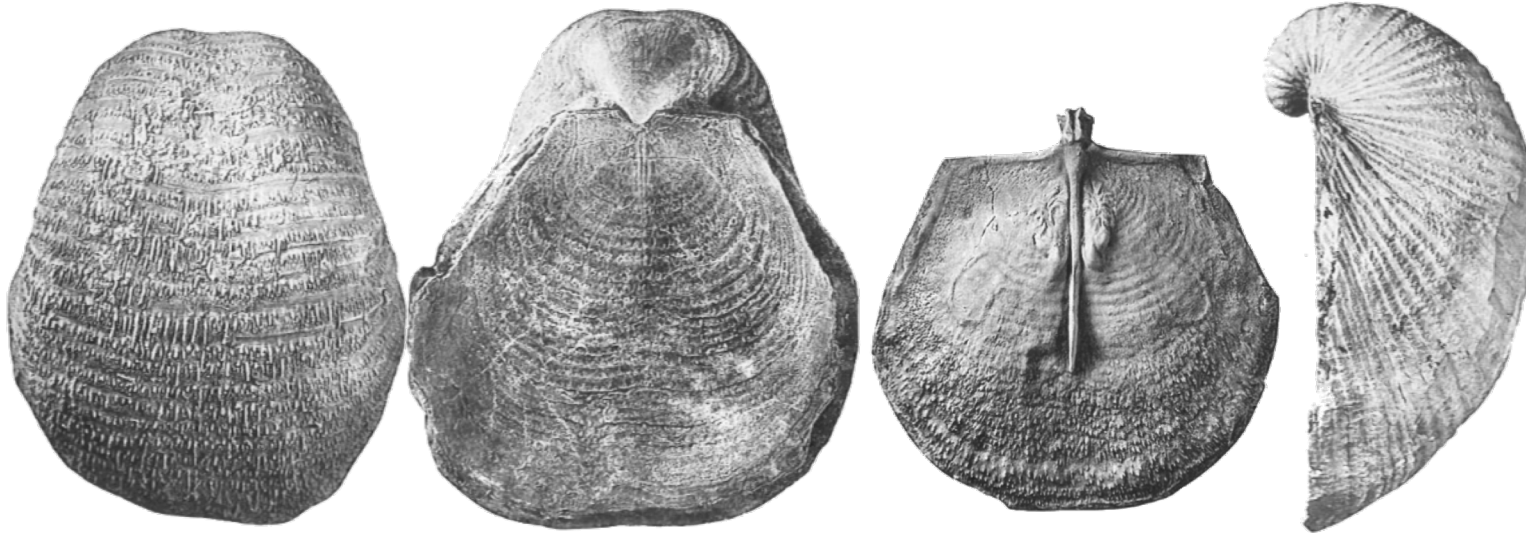
Pulchratia ovalis
Dunbar & Condra 1932



Calliprotonia renfrarum
Muir-Wood & Cooper 1960



Echinaria semireticulatus
Muir-Wood & Cooper 1960



Echinaria semipunctata
Dunbar & Condra 1932



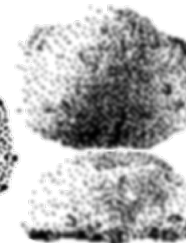


Kutorginella lasallensis
Scheihing 1980, Dunbar & Condra 1932



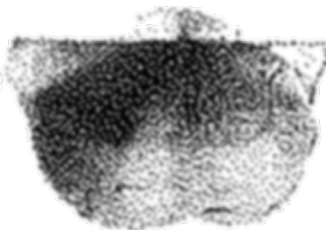
Hystriculina texana
Muir-Wood & Cooper 1960

Marginifera fragilis
Dunbar & Condra 1932



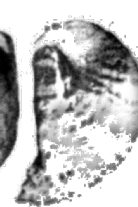
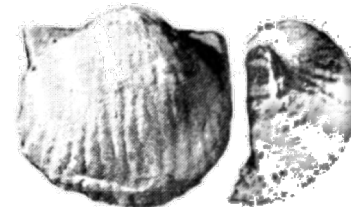
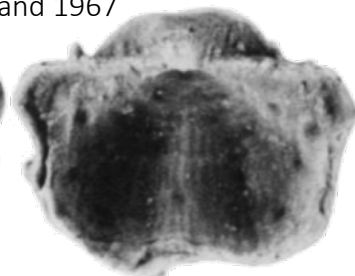
Hystriculina wabashensis
Dunbar & Condra 1932

Desmoinesia muricata
Muir-Wood & Cooper 1960, Dunbar & Condra 1932



Hystriculina armata
Sutherland 1967

Desmoinesia nana
Hoare 1961



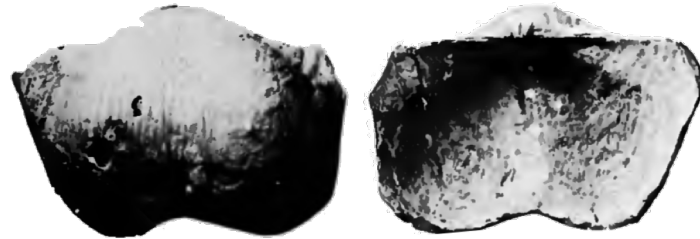
Kozlowskia splendens
Girty 1915, Muir-Wood & Cooper 1960



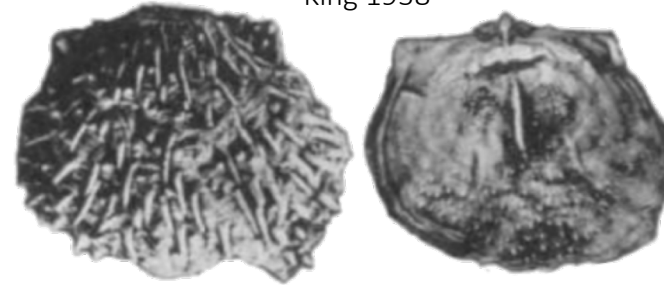
Nudauris diabloensis
Stehli 1954



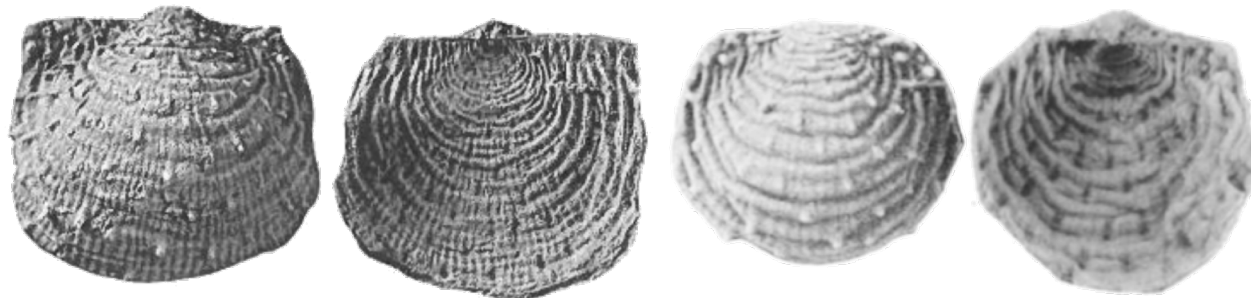
Nudauris presplendens
Cooper & Grant 1975



Heteralosia slocomi
King 1938



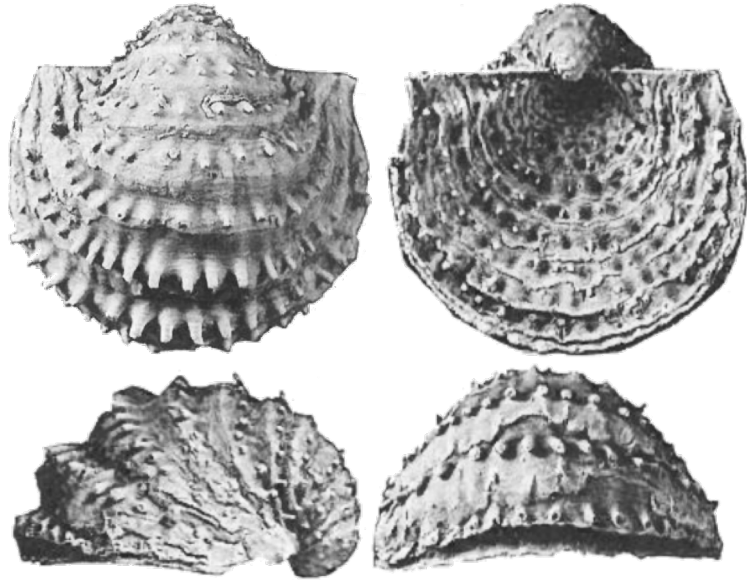
Cancrinella boonensis
Muir-Wood & Cooper 1960, Sutherland 1967



Cancrinella altissima
King 1938



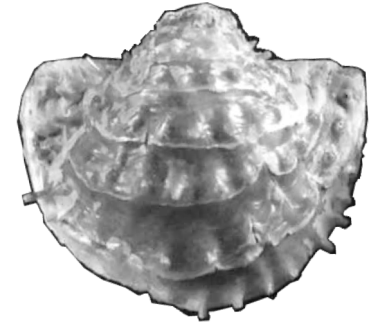
Fimbrinia plummeri
Muir-Wood & Cooper 1960



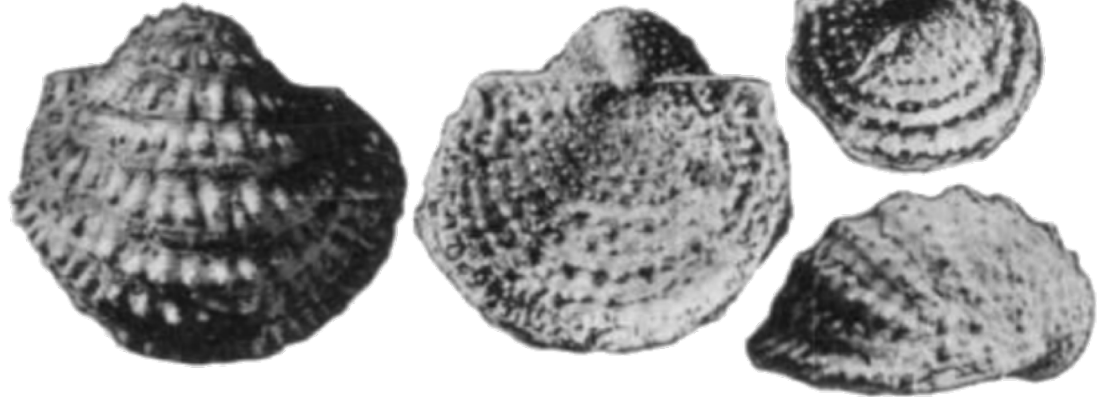
Fimbrinia lianovani
(in prep. 2018)



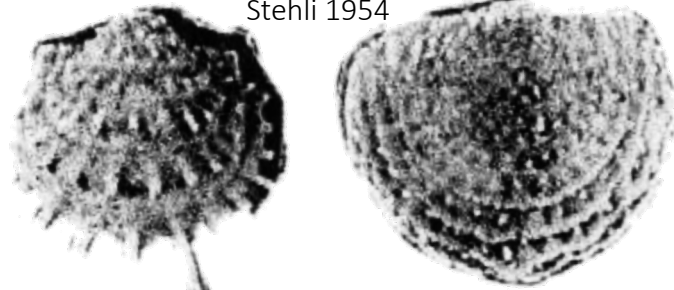
Fimbrinia sp. A (n. sp.)
Jacksboro



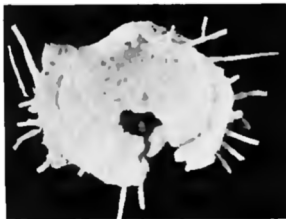
Fimbrinia plummeri
King 1938



Fimbrinia plummeri
Stehli 1954



Fimbrinia sp. 2
Cooper & Grant 1975



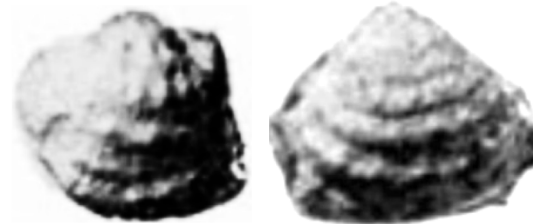
Fimbrinia sp. 3
Cooper & Grant 1975



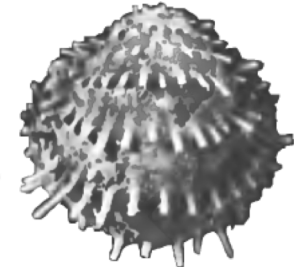
Fimbrinia transversa
Shi & Waterhouse 1996



Fimbrinia cristatotuberculata
Kashirtsev 1956



Fimbrinia ovata
Cooper & Grant 1975



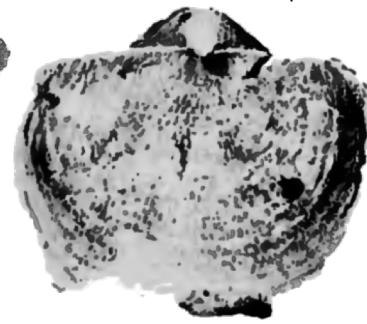
Waagenoconcha irginae
Muir-Wood & Cooper 1960



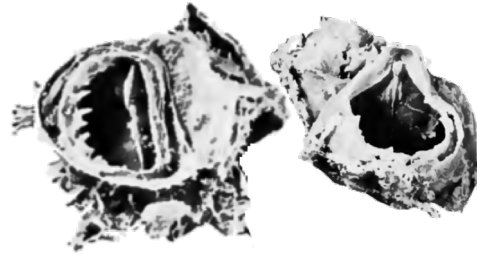
Interior of *Waagenoconcha magnifica*
Cooper & Grant 1975



Waagenoconcha prophetica
Cooper & Grant 1975



Teguliferina boesei
Muir-Wood & Cooper 1960



Teguliferina armata
Dunbar & Condra 1932



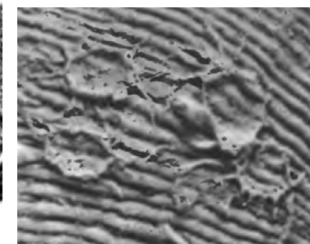
Leptalosia scintilla
Muir-Wood & Cooper 1960



Leptalosia spondyliiformis
Dunbar & Condra 1932

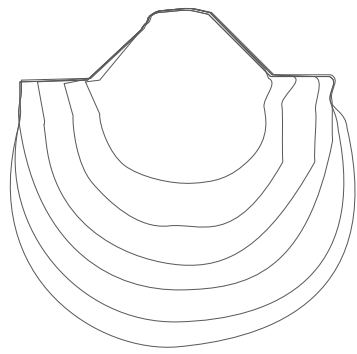


Leptalosia ovalis
Dunbar & Condra 1932, Mudge 1962

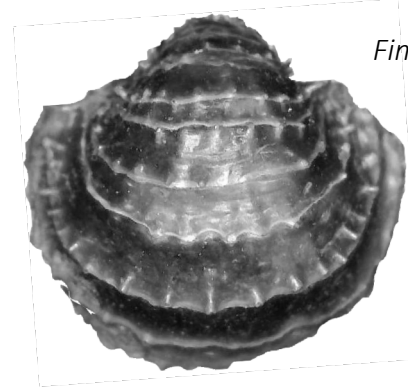


Poikilosakos petaloides
Martin 1965

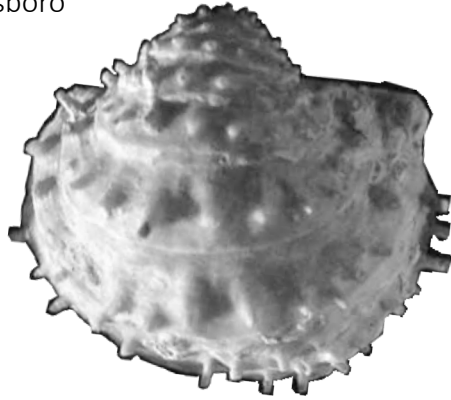
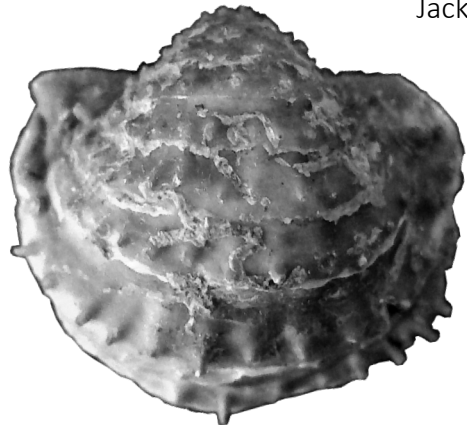




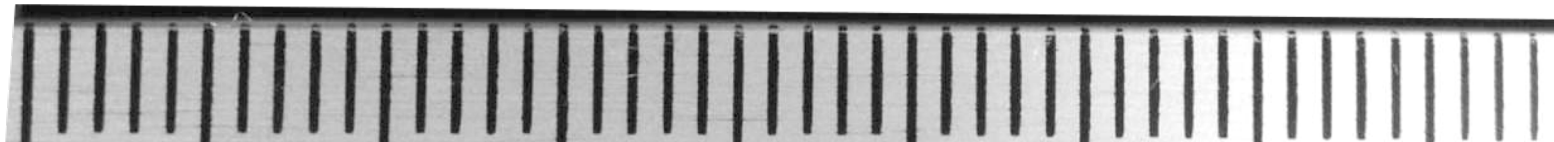
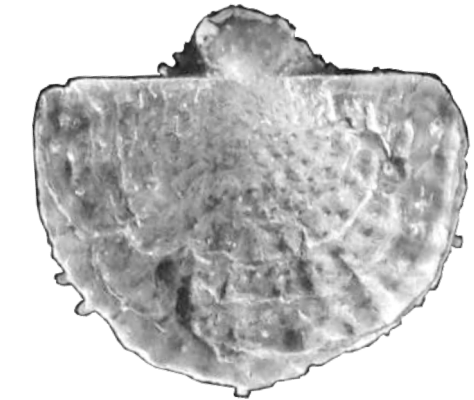
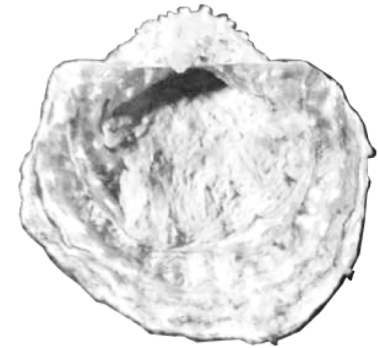
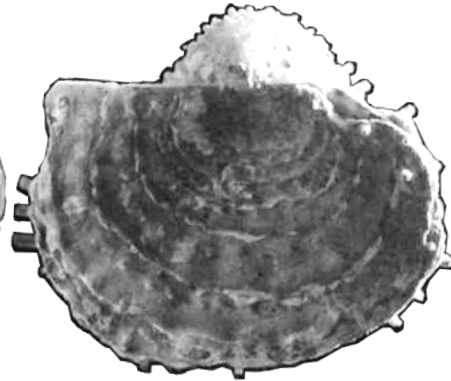
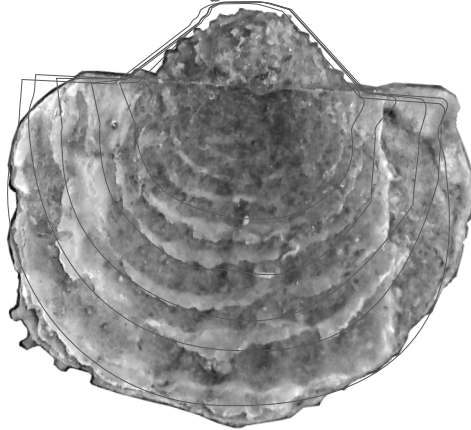
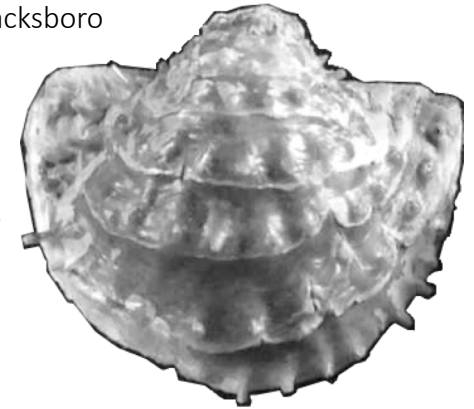
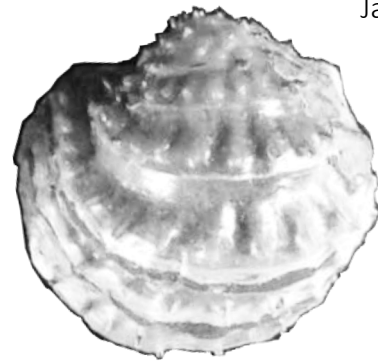
Fimbrinia plummeri
Jacksboro



Fimbrinia lianovani (n. sp.)
Jacksboro



Fimbrinia sp. A (n. sp.)
Jacksboro



Brachiopoda – Productida Chonetoidea

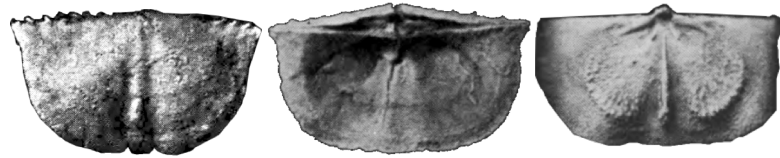
Mesolobus mesolobus
Sturgeon & Hoare 1968



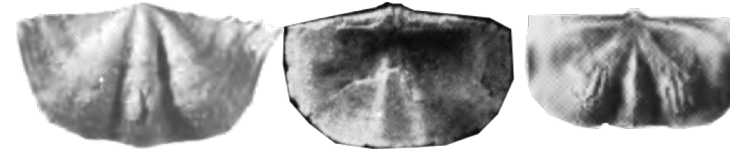
Mesolobus euampygus
Hoare 1961, Dunbar & Condra 1932



Mesolobus decipiens
Hoare 1961



Mesolobus lioderma
Sturgeon & Hoare 1968, Hoare 1961



Mesolobus rochellensis
King 1938



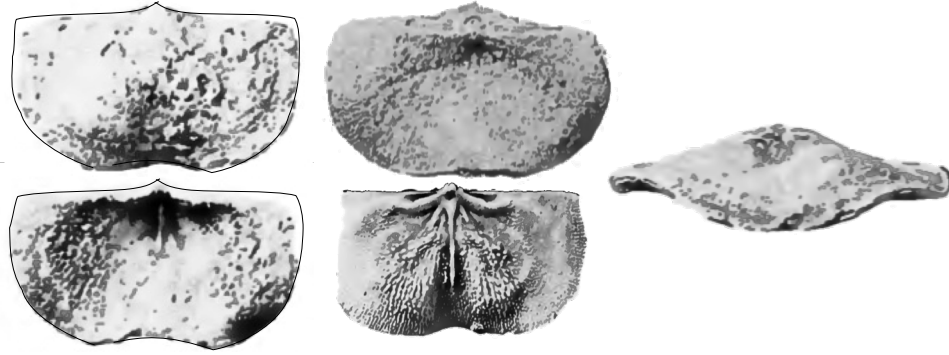
Mesolobus inflexus
Girty 1927



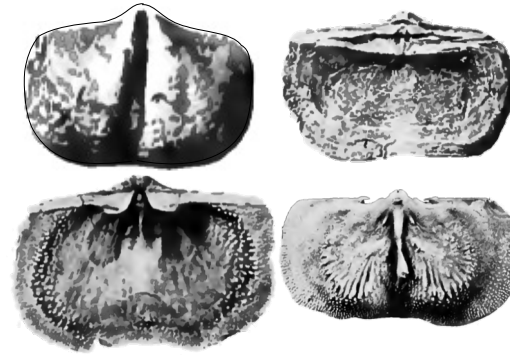
Paeckelmannia derelicta
King 1938



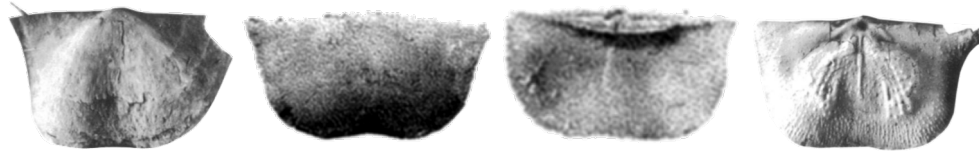
Sulcataria latisulcata
Cooper & Grant 1975



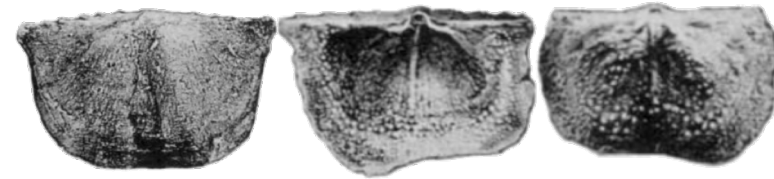
Sulcataria rostrata
Cooper & Grant 1975



Lissochonetes geinitzianus
Scheihing 1980, Dunbar & Condra 1932



Lissochonetes primarius
King 1938



Quadrochonetes geronticus
Scheihing 1980, Dunbar & Condra 1932



Quadrochonetes girtyi
Stehli 1954

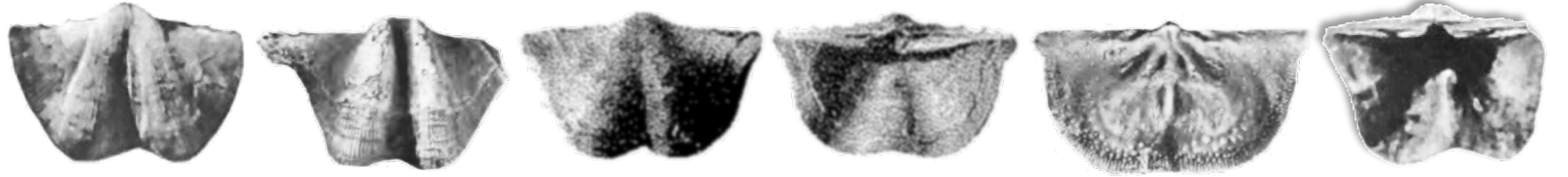


Quadrochonetes plattsmouthensis
Dunbar & Condra 1932, Yale Peabody Coll.



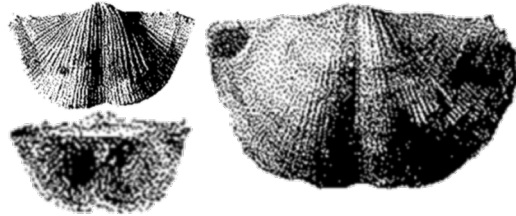
Chonetinella flemingi

Muir-Wood 1962, Sturgeon & Hoare 1968, Dunbar & Condra 1932



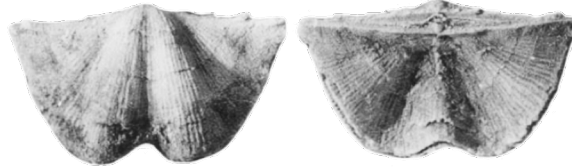
Chonetinella flemingi var. *crassiradiata*

Dunbar & Condra 1932



Chonetinella papilioniformis

Newell 1934



Chonetinella robusta

King 1938



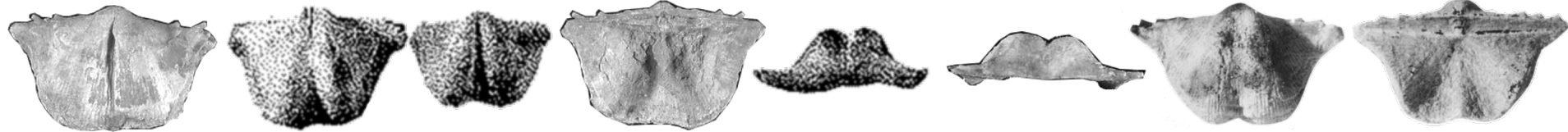
Chonetinella primitiva

King 1938



Chonetinella verneuilliana

Dunbar & Condra 1932, Yale Peabody mus.

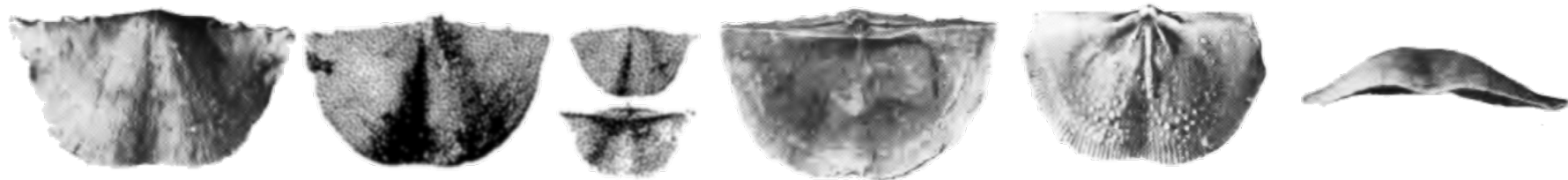


Chonetinella wyandottensis

Newell 1934

Chonetinella plebeia

Sturgeon & Hoare 1968, Dunbar & Condra 1932



Chonetinella alata

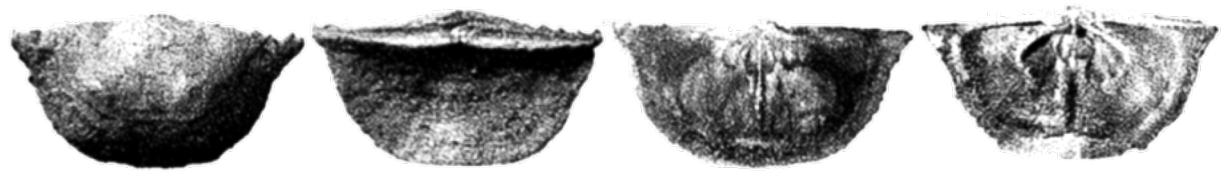
Dunbar & Condra 1932



Neochonetes granulifer
Scheihing 1980, Dunbar & Condra 1932, Sturgeon & Hoare 1968, Girty 1915



Neochonetes meekanus
Dunbar & Condra 1932



Neochonetes acanthophorus
Winkler Prins 2000, Girty 1915



Neochonetes transversalis
Dunbar & Condra 1932



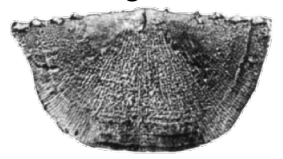
Neochonetes granulifer var. *emaciatus*
King 1938



Neochonetes puebloensis
King 1938



Neochonetes brazoensis
King 1938

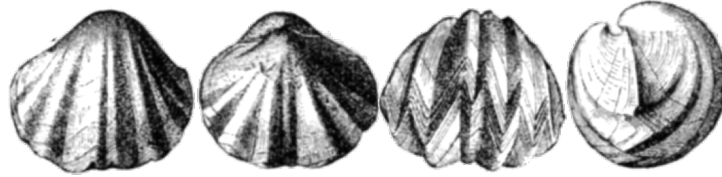


Brachiopoda – Orthida

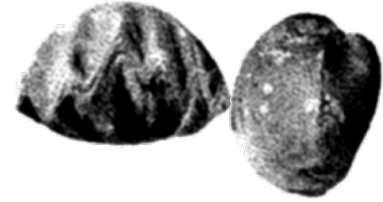
Rhipidomella carbonaria
Dunbar & Condra 1932, Sturgeon & Hoare 1968



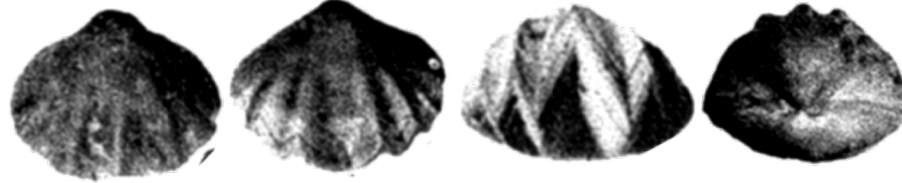
Enteleles hemiplicatus White 1883



Enteleles hemiplicatus
Dunbar & Condra 1932

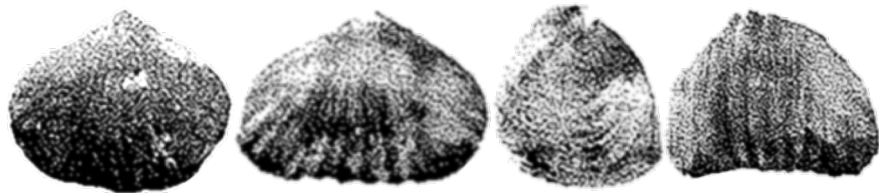


Enteleles hemiplicatus var. *plattsmouthensis*
Dunbar & Condra 1932



Brachiopoda – Rhynchonellida

Rhynchopora magnicosta
Dunbar & Condra 1932



Leiorhynchus rockymontanum
Hoare 1961



Wellerella osagensis
Girty 1915, Sturgeon & Hoare 1961



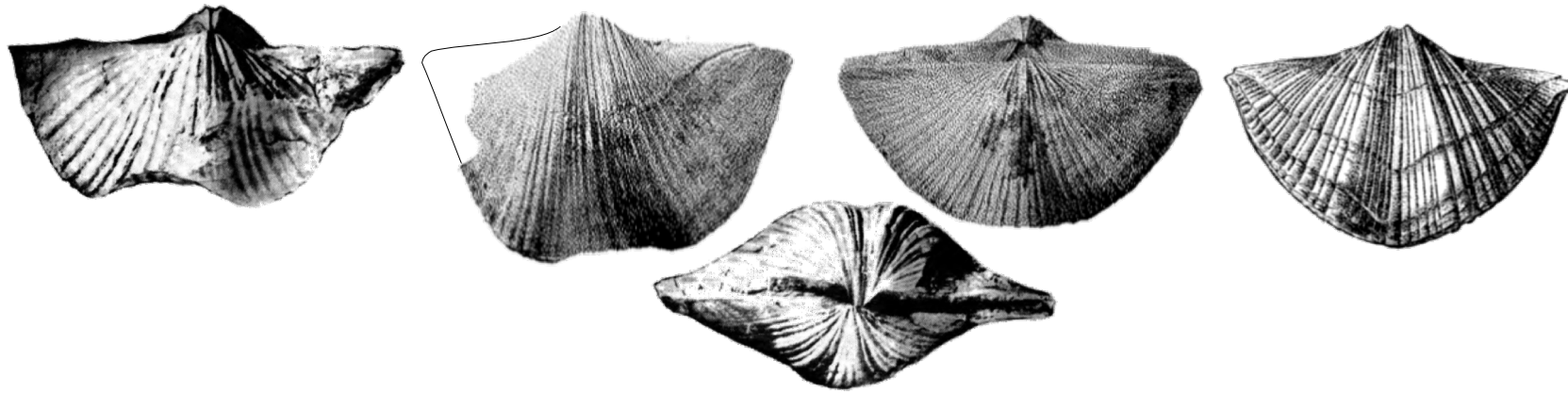
Wellerella osagensis
var. *percostata*
Girty 1911



Brachiopoda – Spiriferida

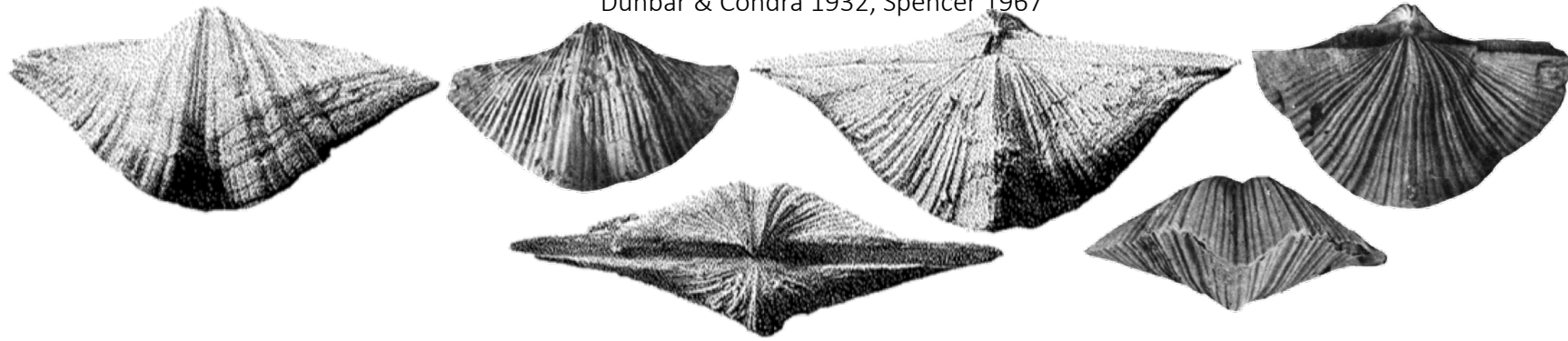
Neospirifer cameratus

Hoare 1961, Dunbar & Condra 1932, White 1883



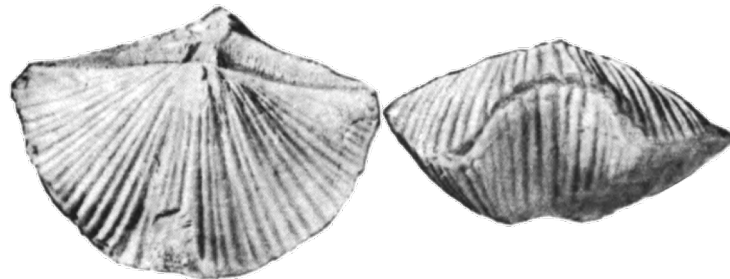
Neospirifer dunbari

Dunbar & Condra 1932, Spencer 1967



Neospirifer goreii

Hoare 1961



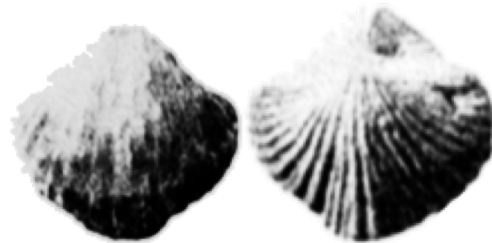
Spirifer occiduus

Hoare 1961

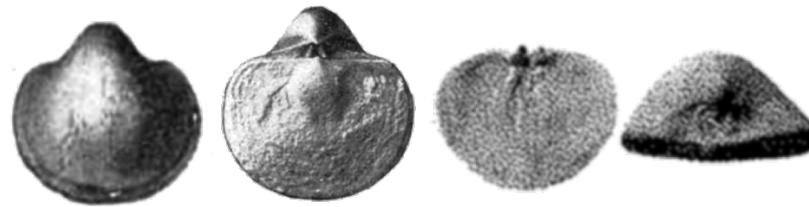


Brachiopoda – Spiriferida

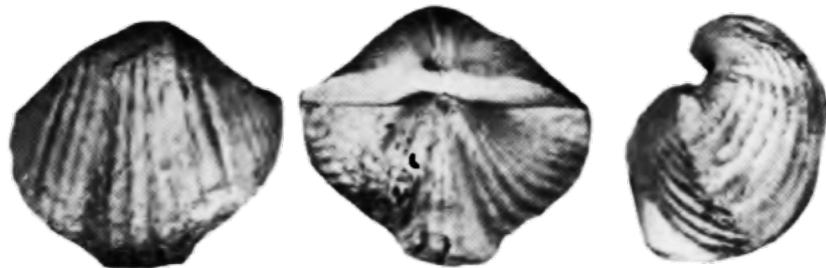
Spirifer rockymontanus
Dunbar & Condra 1932



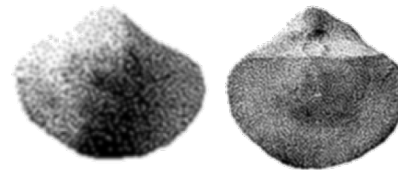
Crurithyris planoconvexa
Girty 1915, Dunbar & Condra 1932



Acanthospirifer opimus
Sturgeon & Hoare 1968



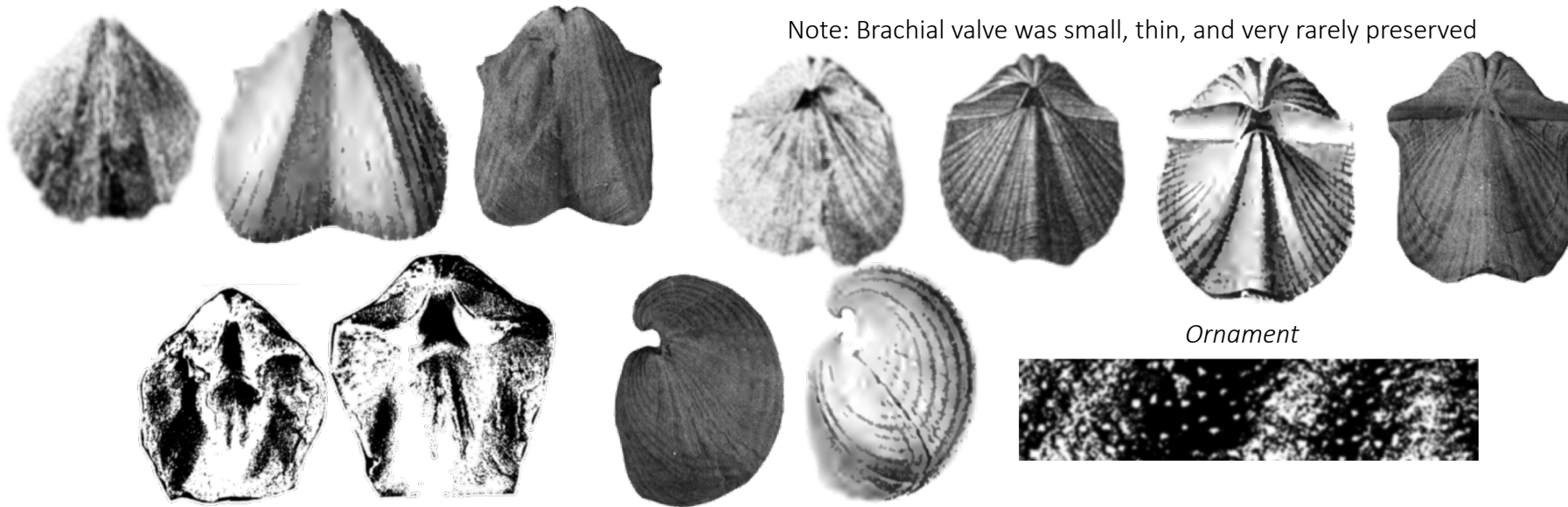
Crurithyris expansa
Dubar & Condra 1932



Eridmatus texanus

Dunbar & Condra 1932, Hall & Clarke 1894, Spencer 1967, Newberry & Meek 1876, Branson 1966

Note: Brachial valve was small, thin, and very rarely preserved

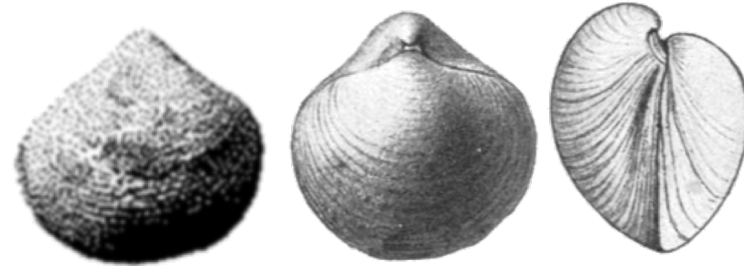


Brachiopoda – Athyridida

Cleiothyridina orbicularis
Girty 1915, Jacksboro

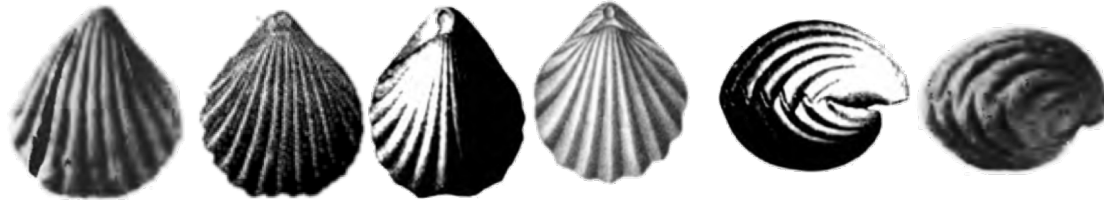


Condrathyris perplexa
Girty 1915, Dunbar & Condra 1932

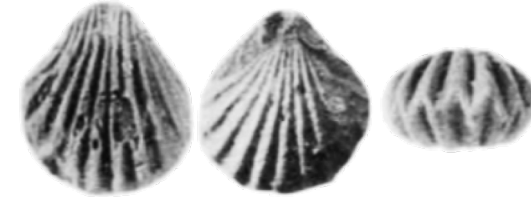


Hustedia mormoni

Dunbar & Condra 1932, Mark 1912, Mudge 1962, Hall & Clarke 1894



Hustedia acuticosta
Newell 1934



Composita subtilita

Lutz-Garihan 1976, Dunbar & Condra 1932



Three shapes of *Composita subtilita* listed as separate by some.

C. trilobata

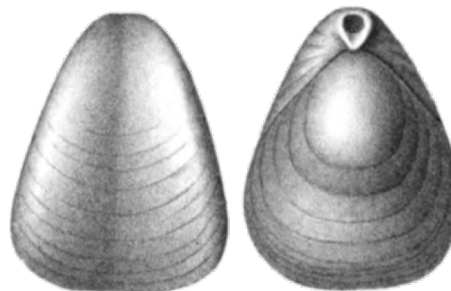
C. elongata

C. ovata



Brachiopoda – Terebratulida

Dielasma bovidens
Hall & Clarke 1894

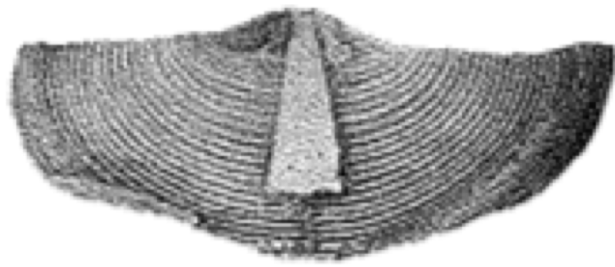


Dielasma subspatulatum
Mather 1915

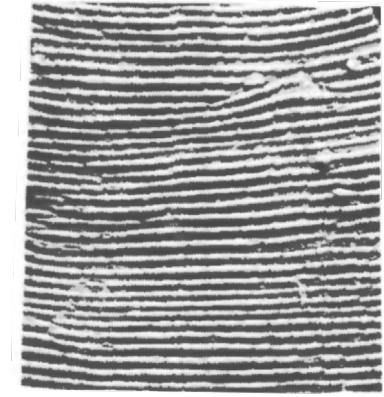


Brachiopoda – Dictyonellida

Isogramma millepunctata
Dunbar & Condra 1932

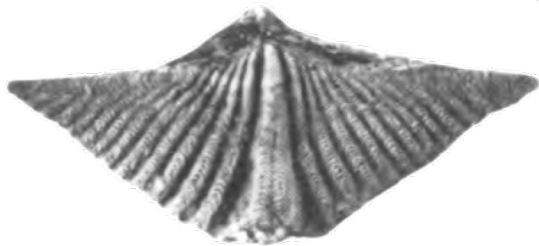


Isogramma millepunctata
Sturgeon & Hoare 1968



Brachiopoda – Spiriferinida

Punctospirifer kentuckyensis
Dunbar & Condra 1932, Sturgeon & Hoare 1968



Punctospirifer kentuckyensis var. *amesi*
Sturgeon & Hoare 1968

